

Facility systems

Innovations

Electronics



Innovations 2010

**BACH
MANN**

Innovations 2010



Bachmann International. Build on the best connections.

Bachmann makes connections. Ensuring that power and data are available right where you need them. For industrial, commercial and home applications, in offices and training rooms, on desks and on conference tables.

Bachmann Facility and IT systems are so flexible that you can always modify them later to suit future power or data management needs. And with Bachmann's latest Electrics range you have the certainty of being able to meet even the more unusual electrical and electronic needs of your customers.





TOP FRAME

Perfect elegance.

TOP FRAME is the new power and data supply solution for conference facilities. Thanks to the completely recessable cover, power and data can be conveniently accessed from any seat around the conference table. The balanced geometry of TOP FRAME fits elegantly into the tabletop, making it possible to finish the surface with a high-quality veneer. TOP FRAME is also elegantly simple to open: just press lightly with a finger and it opens and closes again – silently.

With its surround frame, TOP FRAME is also suitable for retrofitting. The power strips are of course quick to exchange and can be equipped with Bachmann's flexible custom modules.

The advantages at a glance

- Access to power supply and data from any seat
- Opens silently
- Integrated into the top of your desk or table
- Fits flush with the tabletop
- Version with surround frame suitable for retrofitting
- Suitable for veneer finishing
- Configuration can be freely selected
- Complete power strip can be quickly interchanged

TOP FRAME – Fits in elegantly.



TOP FRAME is available in various versions: in EV1 anodised aluminium or powder-coated in RAL 9006. Other surface finishes are available on request. A veneer of up to 0.6 mm can also be glued to the flap.

Version

Frameless version (for mounting below table) or with surround frame (for mounting on top of table). The frameless version requires accurate preparation of the tabletop.

For the version with surround frame a simple cut-out in the tabletop is sufficient, as the frame conceals the aperture. TOP FRAME is available in a short version, with cover length approx. 300 mm, or a long version, cover length approx. 485 mm. The surround frame is available in symmetrical and asymmetrical versions (see page 6).



Frameless
(Mounting below table)



Surround frame
(Tabletop mounting)

Power strip (PDU)

The power strip clips into the installation frame without the need for tools. There is a short version with 4 modules and a long version with 8 modules to suit both TOP FRAME solutions.

TOP FRAME power strips are identical to those of the CONFERENCE models. You can find these in the main Bachmann catalogue and in the Bachmann Facility Systems catalogue.



Built-in frames

TOP FRAME

· Including fixing accessories

Part no. | Version



TOP FRAME		EV1 anodised
Frameless, short – for 4-way PDU		

925.000 | · Anodised EV1 aluminium flap, black powder-coated housing
· Dimensions (L x W x H): approx. 320 x 185 x 98 mm

TOP FRAME		EV1 anodised
Frameless, long – for 8-way PDU		

925.001 | · Anodised EV1 aluminium flap, black powder-coated housing
· Dimensions (L x W x H): approx. 504 x 185 x 98 mm

TOP FRAME		RAL 9006
Frameless, short – for 4-way PDU		

925.002 | · Aluminium flap RAL 9006, black powder-coated housing
· Dimensions (L x W x H): approx. 320 x 185 x 98 mm

TOP FRAME		RAL 9006
Frameless, long – for 8-way PDU		

925.003 | · Aluminium flap RAL 9006, black powder-coated housing
· Dimensions (L x W x H): approx. 504 x 185 x 98 mm

TOP FRAME		RAL 9006
Asymmetrical surround frame, short – for 4-way PDU		

925.500 | · Aluminium flap RAL 9006, black powder-coated housing
· Dimensions (L x W x H): approx. 341 x 185 x 98 mm

TOP FRAME		RAL 9006
Asymmetrical surround frame, long – for 8-way PDU		


925.501 | · Aluminium flap RAL 9006, black powder-coated housing
· Dimensions (L x W x H): approx. 523 x 185 x 98 mm

TOP FRAME		RAL 9006
Symmetrical surround frame, short – for 4-way PDU		

925.800 | · Aluminium flap RAL 9006, black powder-coated housing
· Dimensions (L x W x H): approx. 306 x 192 x 98 mm

TOP FRAME		RAL 9006
Symmetrical surround frame, long – for 8-way PDU		

925.801 | · Aluminium flap RAL 9006, black powder-coated housing
· Dimensions (L x W x H): approx. 583 x 192 x 98 mm

 Max. 16A/230V~

Part no. | Version

2x german type outlet, GST18i3, short (TOP FRAME, CONFERENCE) Length: approx. 260 mm

2x CAT5e, 1x VGA + stereo

- 333.1063
- Anodised aluminium profile, black socket outlets
 - 2 german type socket outlets, set at 35°
 - 2x CAT5e RJ45, front: socket/rear: socket
 - 1x VGA 15-pin + stereo 3.5 mm
 - Power input: GST18i3 plug, power output: GST18i3 socket



1x german type outlet, GST18i3, short (TOP FRAME, CONFERENCE) Length: approx. 260 mm

3x custom modules

- 909.002
- Anodised aluminium profile, black socket outlets
 - 1 german type socket outlet, set at 35°
 - 3x empty modules
 - Power input: GST18i3 plug, power output: GST18i3 socket



CUSTOM

CONFERENCE 2x german type outlet, GST18i3, short Length: approx. 260 mm

2x custom modules

- 909.003
- Anodised aluminium profile, black socket outlets
 - 2 german type socket outlets, set at 35°
 - 2x empty module
 - Power input: GST18i3 plug, power output: GST18i3 socket



CUSTOM

CONFERENCE 3x german type outlet, GST18i3, long Length: approx. 444 mm

5x custom modules

- 909.006
- Anodised aluminium profile, black socket outlets
 - 3 german type socket outlets, set at 35°
 - 5x empty modules
 - Power input: GST18i3 plug, power output: GST18i3 socket



CUSTOM

CONFERENCE 4x german type outlet, GST18i3, long Length: approx. 444 mm

4x custom modules

- 909.007
- Anodised aluminium profile, black socket outlets
 - 4 german type socket outlets, set at 35°
 - 4x empty modules
 - Power input: GST18i3 plug, power output: GST18i3 socket



CUSTOM

CONFERENCE 5x german type outlet, GST18i3, long Length: approx. 444 mm

3x custom modules

- 909.008
- Anodised aluminium profile, black socket outlets
 - 5 german type socket outlets, set at 35°
 - 3x empty modules
 - Power input: GST18i3 plug, power output: GST18i3 socket



CUSTOM

International power socket systems

- We offer these power strips with various international socket systems.



For a complete overview of our product range see the main Bachmann catalogue.





Custom Modules

For custom configuration.

Bachmann custom modules form the modular components of video, audio and network connections. Their construction lets them be used simply and flexibly with Facility products, in 10" and 19" rack panels and in conventional electrical installations.

The quickly and easily interchangeable modules meet all specific requirements for data, video and audio connections and facilitate custom configuration to meet all needs for media technology and network connections. Socket/socket or screw-terminal connections provide an outstanding addition to electrical installations.

With only a few parts the custom modules are compatible with the current switch ranges of leading manufacturers. Simple fitting and removal mean that all installations can be quickly adapted to changed requirements and brought up to the current state of the art.

The advantages at a glance

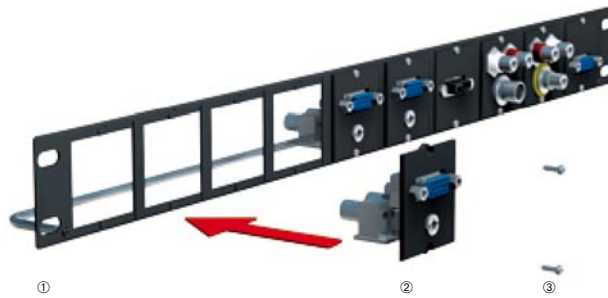
- Flexible interchangeable modules
- For data, video and audio connections
- Can be used in facility systems, racks and electrical installations
- Integration with the switch ranges of leading manufacturers
- Easy to connect via socket/socket or screw terminals

Facility systems



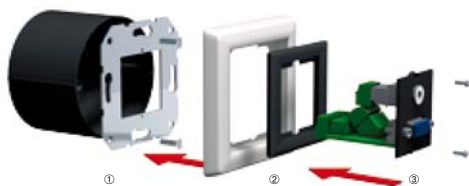
The empty mounting frame^① of Bachmann Facility systems accommodates the custom modules^② which are bolted in and fixed with two Torx screws^③. The modules can easily be changed by loosening the screws.

Media rack

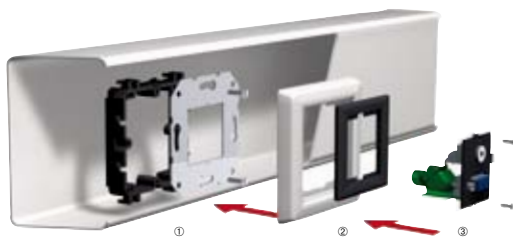


For 19" and 10" racks^① the custom modules^② are simply inserted and screwed in. System integration is made easy with the open design and socket/socket or screw-terminal custom modules.

Electrical installations



A mounting plate^① and adapter frame^② are used to install custom modules^③ in a switch box.



The mounting box is inserted into the trunking. On this base the mounting plate^① and adapterframe^② (50 x 50 mm or 55 x 55 mm) and the Bachmann custom module^③ are bolted.

KNX

FACILITY SYSTEMS

Facility Control Modules

Pushbutton modules in the Bachmann custom module format offer convenient control of light and blinds in open-plan and individual offices and meeting and conference rooms. The control module is installed within the user's easy reach in the desk connection panel on office workstations or in meeting rooms. Then the lighting and blinds settings can be controlled with ease from the user's seat. The increased convenience lets the user respond to changing environmental situations – and thus save energy.

For other Bachmann control systems please see our MediaNet brochure.



KNX pushbutton module 4-way

The 4-way KNX pushbutton module is designed as a custom module and can be integrated into Bachmann Facility systems either by the manufacturer or retrospectively. Installation in rack and electrical installations is also possible with the custom module system.

Functions such as switching, dimming, storage of lighting scenes, blind control etc. can be programmed by specialist personnel using the standard ETS software. For this, specialist knowledge and in-depth KNX training is required.

Each button can be configured to the user's wishes and appropriately labelled (common pictograms are supplied with the unit). The blue illumination indicates the activity status.

This pushbutton module can be simply installed by KNX-trained personnel. The appropriate bus coupling is built into the module and can be simply connected to the bus cable by means of clips.

KNX/EIB 4-button custom module



- Front:
- 4x buttons, square, self-labelling, blue backlit, programmable on EIB/KNX installations
 - With integral bus coupler and bus terminal (can be labelled with physical address)
 - Supply voltage: system voltage 30 V DC via bus terminal
 - Includes inserter with common pictograms
 - Use: e. g. as buttons for controlling lighting, blinds etc.



Micro clamp terminals

Part no. 917.056

- Rear:
- BUS connector
 - Requires approx. 35 mm installation depth



EnOcean pushbutton module 4-way

The EnOcean pushbutton offers wireless control of e.g. lighting, blinds, projector screen etc. Installation is simple: the pushbutton module can be used in Bachmann desk connection panels with custom modules or in wall or trunking installations. The required control signals are radio transmitted to the receiving device. Each button can be separately programmed. With EnOcean technology (868 Mhz), interference is practically eliminated.

No cable installation is required for this module. Power is obtained from a built-in battery that will last for up to 1 million switching cycles.

If required the EnOcean pushbutton module can also be linked into the KNX building control system bus.

EnOcean 4-button custom module



Micro clamp terminals

Part no. 917.093

Rear:

- Batteries included
- Requires approx. 35 mm installation depth

Front:

- 4x buttons, square, self-labelling, backlit blue
- Programmable on EnOcean applications
- Supply voltage: radio module battery-backed
- Includes inserter with common pictograms
- Use: e.g. as buttons for controlling lighting, blinds etc.



HDMI custom module



Front:
 · HDMI socket for image and audio signal transmission from devices with HDMI outputs (e.g. from laptop, PC monitor DVD to plasma monitor, projector, DVD, SAT etc.)



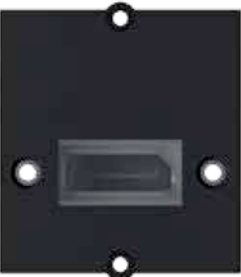
Socket, screw terminal

Part no. 917.143

Rear:
 · Screw terminal 2x 9-pole
 · Requires approx. 40 mm installation depth



DisplayPort custom module



Front:
 · DisplayPort for image and audio signal transmission from devices with DisplayPort output (PC monitor, DVD, plasma etc.)



Socket

Part no. 917.145

Rear:
 · Socket without cable
 · Requires approx. 70 mm installation depth



USB A/A custom module



Front:
 · USB 2.0 socket x 2 for data transmission



Socket, screw terminal

Part no. 917.141

Rear:
 · Screw terminal 2x 4-pole
 · Requires approx. 40 mm installation depth



Floor box



Part no. | Version

Floor box mounting 2x Sheet steel

2x custom modules

CUSTOM

- 917.068 · For fitting in OBO Bettermann device case/floor-box systems
- For mounting 2 custom modules (transverse mounting)
- Incl. Torx M2 screws



Floor box mounting 3x Sheet steel

3x custom modules

CUSTOM

- 917.067 · For fitting in OBO Bettermann device case/floor-box systems
- For mounting 3 custom modules (transverse mounting)
- Incl. Torx M2 screws



Floor box mounting 2x Black plastic

2x custom modules

CUSTOM

- 917.139 · Mounting for Electraplan floor boxes
- For mounting 2 custom modules (transverse mounting)
- Incl. Torx M2 screws for custom modules



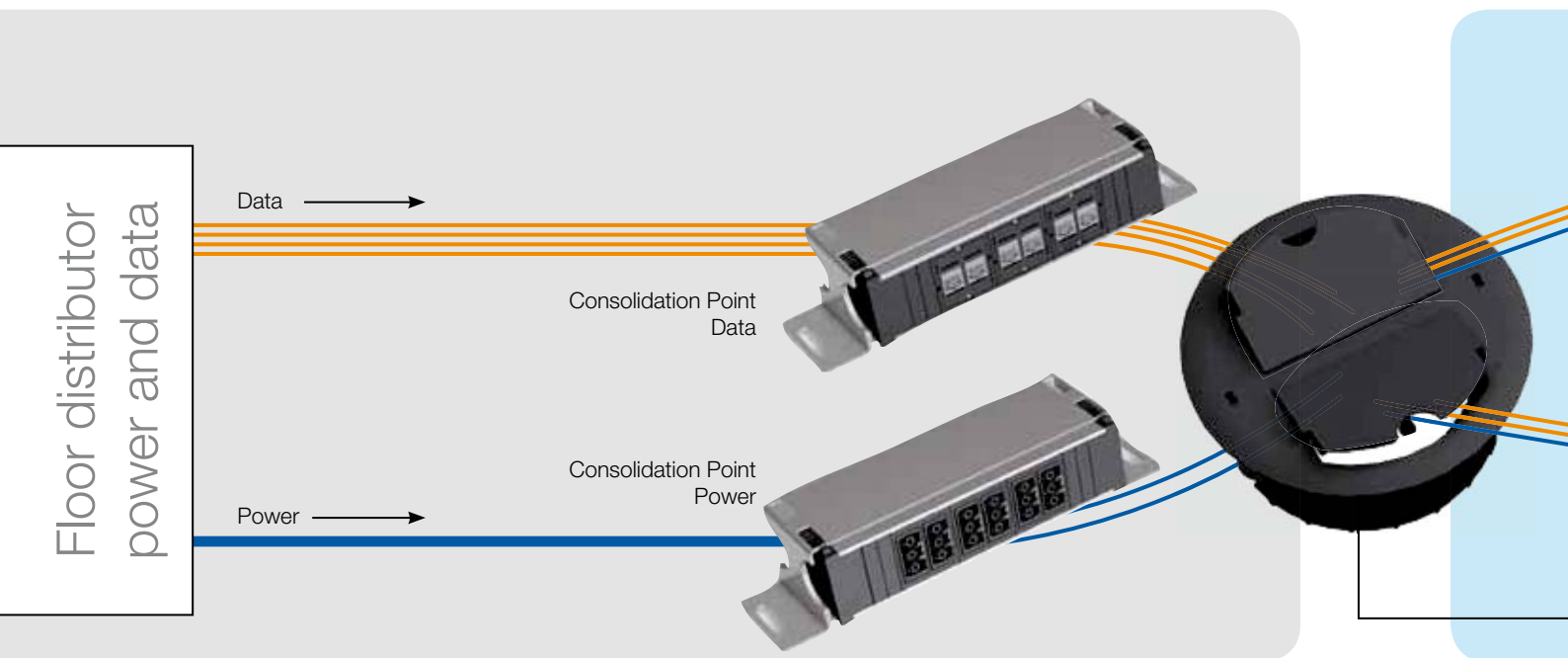
Floor box mounting 3x Black plastic

3x custom modules

CUSTOM

- 917.140 · Mounting for Electraplan floor boxes
- For mounting 3 custom modules (transverse mounting)
- Incl. Torx M2 screws for custom modules





Consolidation Point

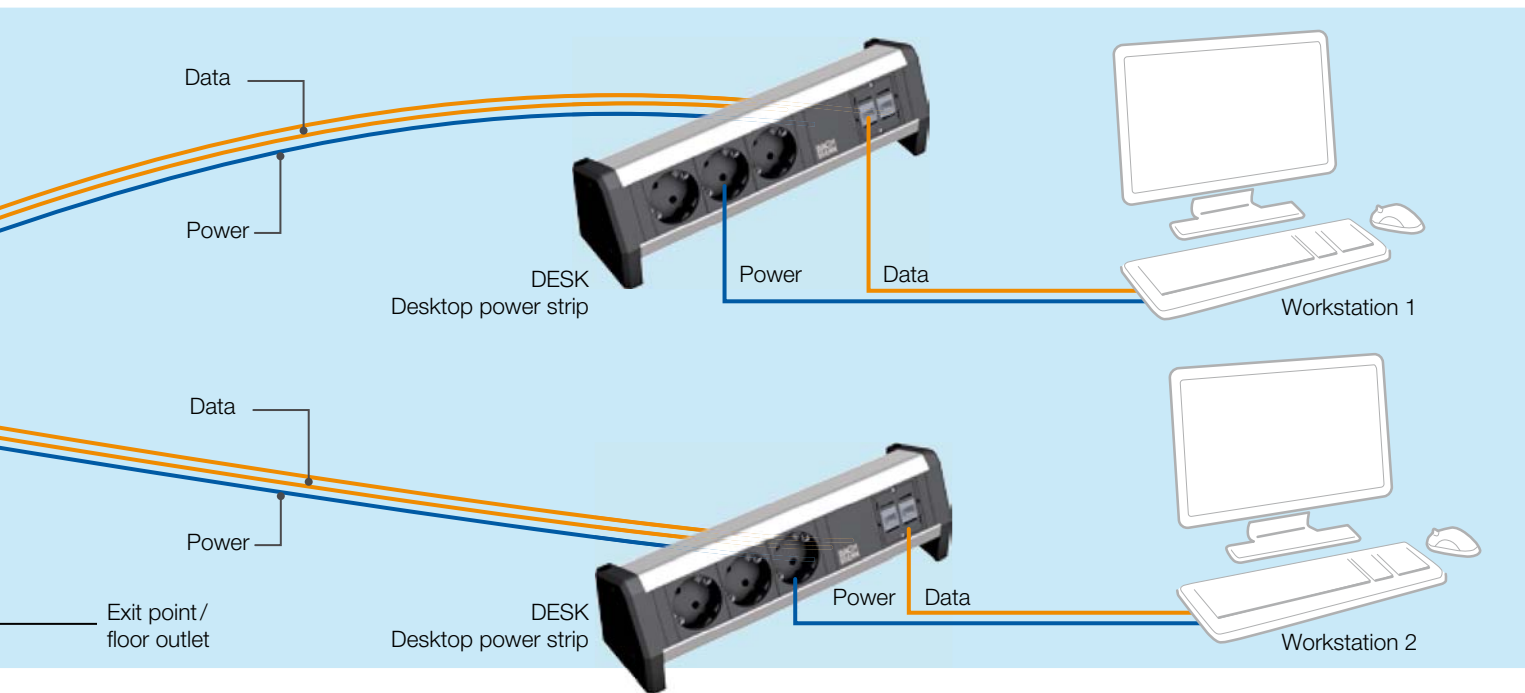
Installation solutions from a single supplier.

Bachmann's new system for under-floor distribution and installation, based on the MUTO (multi-user terminal outlet) concept, offers a coherent and simple installation solution that brings power and data to the desktop.

Consolidation points for power and data are conventionally linked to the floor distributor. Floor outlets and desktop power strips from the Bachmann Facility range complete the installation kit. After the consolidation point the floor outlet allows power and data to be conveyed with ease to the workstation. This dispenses with complicated, inflexible installations such as traditional arrangements with floor boxes.

Thanks to 'open-office cabling', CP and MUTO concepts the network installation is flexible, future-proof and at the same time cost-optimised. Combinations of power and data connections can be found in various Bachmann Facility systems. They thus offer a user-centred unit providing all necessary connections.

In the main Bachmann catalogue you can also find different desktop power strips for mounting on top of or within office workstation desks. All versions can be configured as required and supplied ready for use.



CP mounting

- Stable steel plate mounting for CPs
- Mountings with secure, tool-free clip-in and release mechanism
- Anchors firmly on the floor with integrated screw-on brackets
- Mounting with increased step protection of approx. 200 kg incl. CP unit
- Raised position of CP units for greater protection in case of slight ingress of water

Power CP front



Power CP rear view



Power CP

- Power CP is fully wired and electrically tested at the factory.
- Power connections with connector systems by Wieland (Gesis GST); Versions with Wago (Winsta) available on request
- Other connector systems can be used where required
- Time-optimised on-site installation
- Future-proof thanks to flexible structure

Power CP rewirable



Data CP

- CP Data flexible and modular with custom modules
- Various manufacturers' systems can be integrated
- Easy to install and future-proof thanks to modular structure
- Should a change be necessary, only the data connector unit is changed
- Mounting and unit remain unchanged
- Additional strain relief for data connection can be provided with cable tie

Data CP front



Data CP rear view



Units for power and data, mounting

Consolidation point units for power

- Fully wire and electrically tested
- With Wieland GST18i3 plug

Part no. | Version

Consolidation point units for power

Short

919.2000	· 6-way GST18i3 socket, black, 1-phase · Power input: GST18i3
919.2001	· 2x 3-way GST18i3 socket, 2-phase · Sockets in black and red · Power input: GST18i3

Consolidation point units for power

Long

919.2002	· 12-way GST18i3 socket, black, 1-phase · Power input: GST18i3
919.2003	· 2x 6-way GST18i3 socket, 2-phase · Sockets in black and red · Power input: GST18i3
919.2004	· 3x 4-way GST18i3 socket, 2-phase · Sockets in black, red and grey · Power input: 3x GST18i3 socket
919.2005	· 3x 4-way GST18i3 socket, 3-phase · Sockets in red, black and grey · Power entry is via the end cap with rewirable terminal to allow connection by user



Consolidation point units for data

- Without power, to integrate with Bachmann custom modules
- Anodised aluminium profile

Part no. | Version

Consolidation point units for data

CUSTOM

912.000	· 3x custom modules, empty · Short: 217 mm
912.001	· 6x custom modules, empty · Long: 356 mm



Consolidation point mounting

- Colour black (RAL 9005)
- Mounting in steel plate

Part no. | Version

Consolidation point mounting

L x W x H: 295 x 85 x 65 mm

919.1100	· Short (for units with 3 modules)
----------	------------------------------------

Consolidation point mounting

L x W x H: 435 x 85 x 65 mm

919.1101	· Long (for units with 6 modules)
----------	-----------------------------------



Floor outlet for dry-maintained floors

Outlet for dry-maintained floors (raised and false floors) from 24 mm thickness for the cable outlet from the subfloor (consolidation point) to the power strip on the desk. The outlet is provided with a very simple universal fixing. With one rotation of each of the two eccentric Allen bolts in the outer ring the outlet is anchored firmly into the floor, yet can easily be removed again if required. 2 flaps, each of which can be opened to a position independent of the other, through which cabling is routed out from floor. The flaps can be snap-fastened in open positions, thus preventing cables becoming bent and possibly damaged. If required the flaps can be rotated through 130° with the inner ring. Textile-fibre sleeves or cable management systems from the Bachmann range can be docked to the outlet flaps. If the outlet is no longer used, the flaps can be lowered and used as a blank cover that can be stepped on.

- Exit point/floor outlet for power and data cables
- Fits in raised floors with thicknesses from 24 mm
- Hole diameter 112 mm
- Simple fixing mechanism with Allen bolts
- 2 flaps, rotatable though approx. 130°, for cable outlet
- Material: polyamide (halogen free)

Part no. | Version

Exit point/floor outlet **RAL 9005**

919.1000 | · Black RAL 9005

Exit point/floor outlet **RAL 7035**

919.1001 | · Light grey RAL 7035

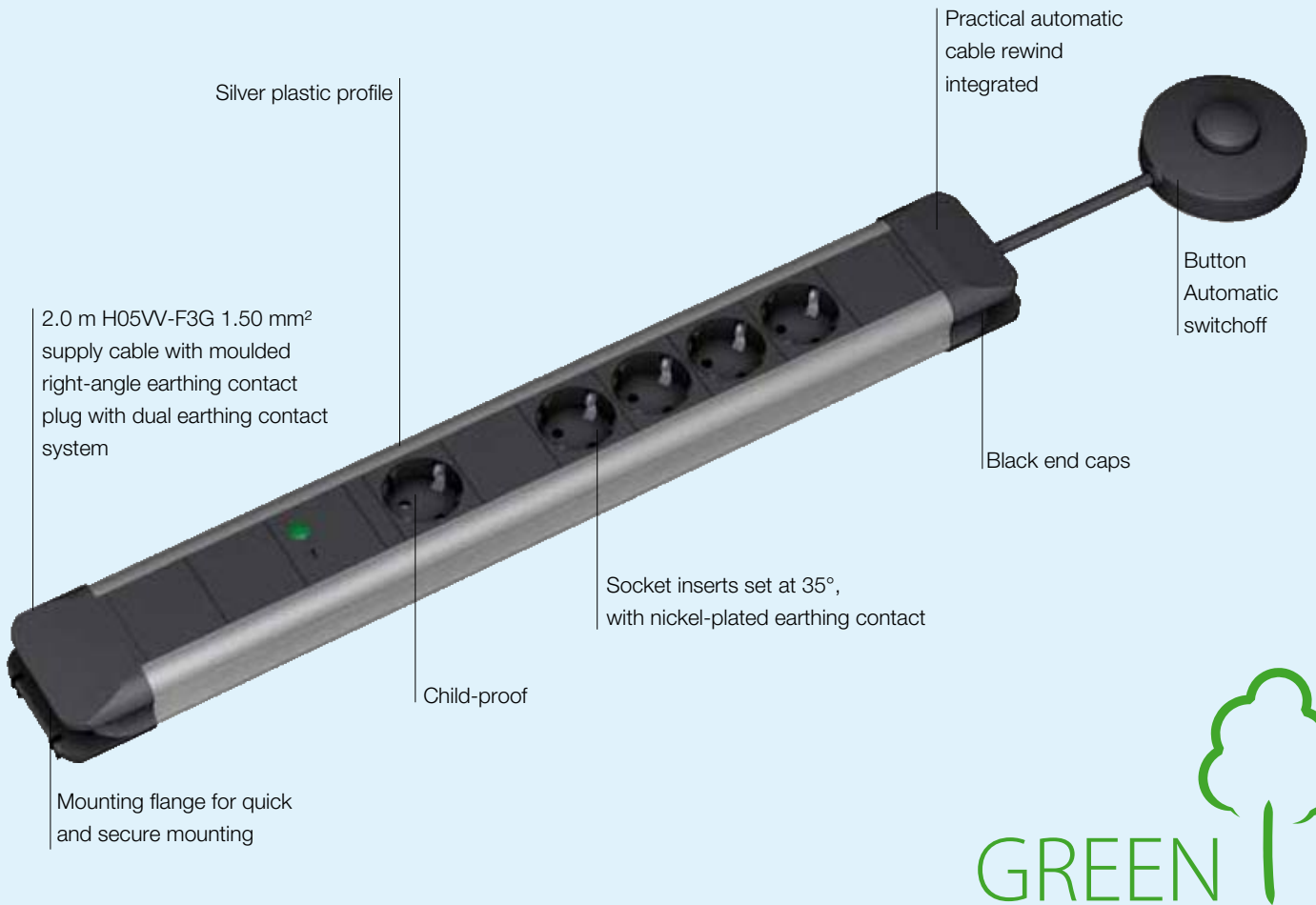


Desktop power strips from the Bachmann Facility systems range

With Bachmann Facility systems, you can be sure of having access to the best connectors and connections worldwide. Our systems can be configured with all current international socket and data connection types. Modules can be quickly modified or exchanged without great effort or outlay.



For desk power strips and other desktop solutions see our 10Gbit installations brochure.



CONNECTUS

With automatic switchoff.

The advantages at a glance

- Very good price/performance ratio
- Exclusive to the specialist trade
- Wide range
- High-grade technology
- Tested components
- Halogen and PVC-free socket recesses


CONNECTUS automatic switchoff

Socket outlets fitted with switches are generally well suited to energy saving, since they can prevent the connected equipment being left in standby mode. Unfortunately, however, people often forget to switch them off. The automatic switchoff device saves energy automatically, with intelligent electronics.

- 30 seconds after shutdown/switchoff of the device connected to the master socket, isolates this plus all devices plugged into the slave sockets (e.g. PC, TV) from the mains automatically
- Power can be restored simply by pressing the button
- Optional remote-controlled relay (mounts simply on the tabletop)
- Saves up to 200 kWh/year per workstation (with PC, monitor and printer)

~ 40 € per workstation per year

These figures do not refer to the product shown specifically and are not a part of the product offer but are provided solely for purposes of comparison.

 Max. 16A / 3,680W

- Supply cable: approx. 2.0 m H05VV-F 3G 1.50 mm², black with german type right angle plug
- External button (foot-activated switch) on approx. 2.0 m cable
- Also cuts off standby consumption from master socket

Part no. | Version | Dimensions: (L x W x H)

CONNECTUS

1x integrated automatic switchoff device

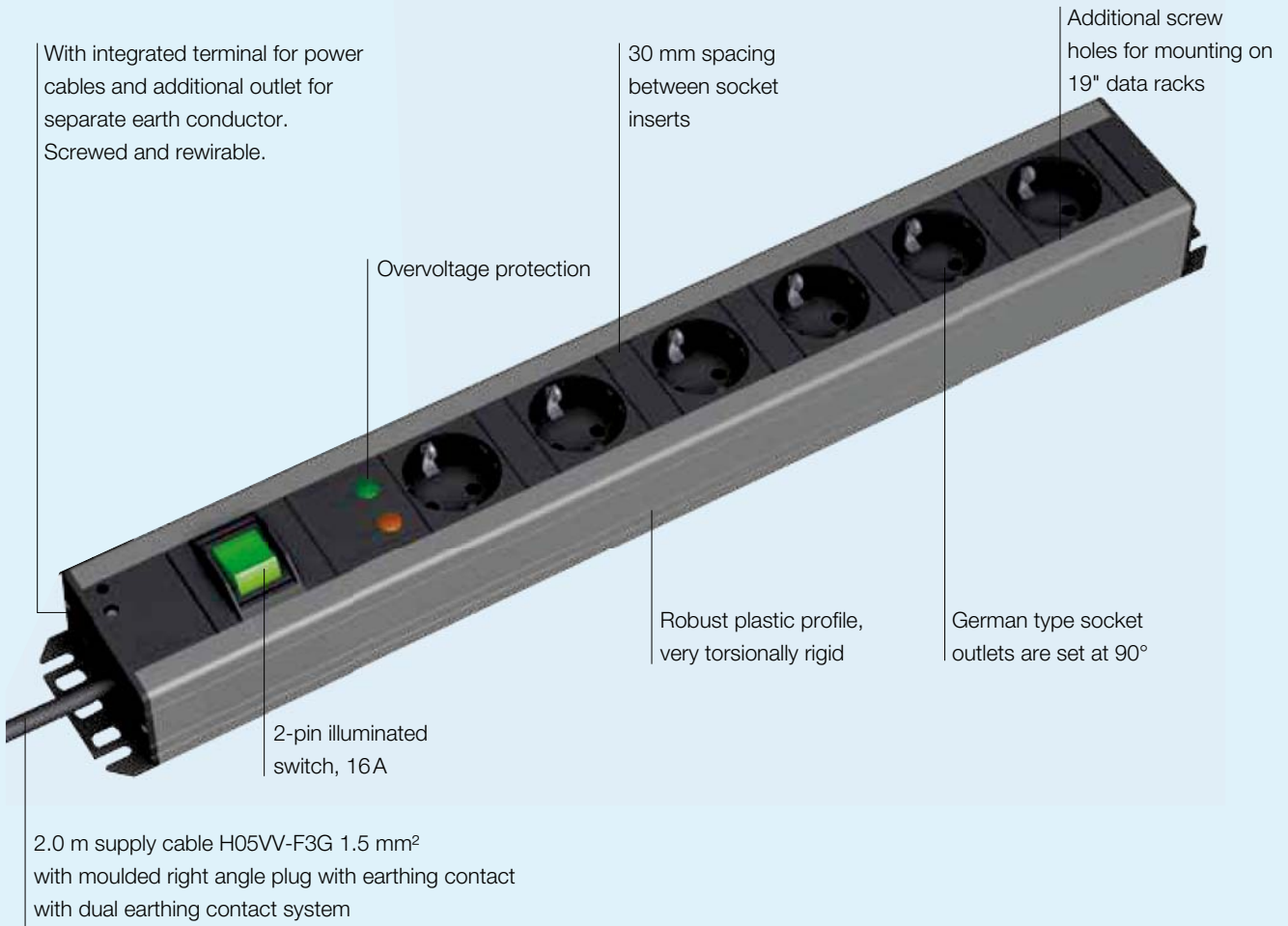
330.140	<ul style="list-style-type: none"> • 1 master + 4 slave german type socket outlets • With integral automatic switchoff device • With external button • With threshold value setting 	<ul style="list-style-type: none"> • approx. 538 x 72 x 49 mm
---------	---	--



CONNECTUS

6x german type socket outlet, black/grey with child protection, 1x foot-operated switch with LED, black

330.153	<ul style="list-style-type: none"> • Supply cable H05VV-F 3G1.50mm² 1,5m black to the plug • H05VV-F4G1.50mm² 1,5m black to the switch • 1x overvoltage protection + mains and frequency filter • Not openable, not rewirable • Packed in carton box 	<ul style="list-style-type: none"> • ca. 572 x 72 x 49 mm
---------	---	--



CRAFTSMAN POWER STRIP

Robust, professional quality plastic strip.

With increased distance between socket outlets, for easy power pack and operational device positioning.

The advantages at a glance

- Modern, technical design
- End caps with additional screw holes for mounting in data racks
- Additional earth conductor can be connected without opening the housing
- Strips available in 19" dimensions

 CRAFTSMAN POWER STRIP set at 90° with overvoltage protection

- Supply cable: 2.0 m H05VV-F3G 1.5 mm², black with german type right angle plug
- Socket inserts, black, 30 mm spacing between sockets

Part no.	Version	Dimensions: (L x W x H)
CRAFTSMAN POWER STRIP 90°		
1x overvoltage protection, 1x switch, green		
300.011	· 6 german type socket outlets	· Approx. 490 x 74 x 45 mm
CRAFTSMAN POWER STRIP 90°		
1x overvoltage protection + mains and frequency filters, 1x switch, green		
300.012	· 6 german type socket outlets	· Approx. 575 x 74 x 45 mm



Overvoltage protection with filter

Overvoltage protection – conforms to DIN VDE 0620-1:2002-01, EN 61643-11:08-2007, requirement class D, leakage current 6.5 kA, response time < 25 ns. Suitable for 16A (miniature fuse on request) with varistors, thermal fuses, gas outlet, visual function and failure display (acoustic indicators also available on request). Mains and frequency filters – conforming to VDE 0565 Part 3-1, EN 133200:2000-05 for voltage peaks up to 30 MHz – damping diagram – please request our data sheet.

Dimensions (L x W x H):
105 x 120 x 95 mm

Socket rotatable through 90°
with overvoltage protection

2 fixed sockets,
one on each side,
with overvoltage protection



Supply cable: 2.0m H05VV-F3G 1.00 mm²,
black with right angle plug with earthing contact

POWERCUBE

The little desktop all-rounder.

These cubes look good on any desk and combine modern design with technical versatility. Various functions are combined in a compact, practical and space-saving unit offering the user a variety of possible applications. Powercubes fit into any office environment equally well.

The advantages at a glance

- Overvoltage protection and earthing indicators: the green LED shows that the power network is securely earthed. The red LED shows that the voltage protection unit is functioning correctly.
- X3 multi-level metal-oxide varistor absorbs power pulses and thus offers protection against high-energy voltage peaks.

 POWERCUBE 10A/230V

- Resettable circuit breaker 10A
- Headphone and microphone jacks
- Overvoltage protection indicator (LED)
- Earthing indicator (LED)
- X3 multi-level metal oxide varistor
- High-frequency capacitor for noise reduction
- Safety shutdown technology
- Child-proof sockets



Part no. | Version

POWERCUBE, 3x german type outlet

335.050 | · 3 german type socket outlets


POWERCUBE Protection, 3x german type outlet

335.051 | · 3 german type socket outlets
 · Telephone, fax, modem and network protection
 · USB 2.0 charging device with 2 ports

Mechanical, digital

Mechanical clock timers

- Mechanical clock timers, 24 h, 16A / 230V~/3,680W:
- Plastic version child-proof, easy to operate, operating manual included



Part no. | Version

Mechanical clock timer

- 852.101
- White
 - Smallest switching interval: 15 minutes
 - Up to 96 switch-on and switch-off times per day (24 h)
 - 121 x 74 x 76 mm (L x W x H)



Clock timer

1x splash water protection (IP 44)

- 852.102
- With transparent hinged lid
 - Suitable for use in damp locations
 - Operating temperature range: -25 °C to +55 °C
 - Smallest switching interval: 15 minutes
 - Up to 96 switch-on and switch-off times per day (24 h)
 - 150 x 74 x 82 mm (L x W x H)



Mini

Mini clock timer (mechanical)

- 852.104
- White
 - Smallest switching interval: 30 minutes
 - Up to 48 switch-on and switch-off times per day (24 h)
 - Switch to override timer function
 - 103 x 54 x 70 mm (L x W x H)

Digital clock timer, 24h, 16A/230V~/3,680W

- Plastic version with LCD display, child-proof, easy to operate, operating manual included, built-in rechargeable battery; shortest switching interval: 1 minute
- Daily and weekly programming possible, built-in random generator, countdown function, can be reset



Part no. | Version

Digital clock timer

- 852.103
- White
 - 120 x 64 x 76 mm (L x W x H)

Practical
hanger

Energy cube

- Wired ready for use
- Cable entry with screw fitting
- Offers high flexibility and more freedom of movement, e. g. in workshops and assembly areas

Practical
multi-purpose hook



Compressed air
optional

Energy cube
in special
unbreakable plastic

Part no. | Version

Energy cube 4x german type outlet

For cable diameter up to 3 x 1.5 mm² – 5 x 1.5 mm²

349.300	· 4 german type socket outlets, 16A/230V
349.301	· 4 german type socket outlets, 16A/230V · 1 compressed-air supply with input 1/2" and 2x outlet 1/2"

Energy cube 1x CEE, 4x german type outlet

For cable diameter 5x 1.5 mm² – 5x 2.5 mm²

349.302	· 1 CEE socket, 16A/400V, 5-pin · 4 german type socket outlets, 16A/230V
349.303	· 1 CEE socket, 16A/400V, 5-pin · 4 german type socket outlets, 16A/230V · 1 compressed-air supply with input 1/2" and 2x outlet 1/2"

Energy cube, 2x CEE, 2x german type outlet

For cable diameter 5x 1.5 mm² – 5x 4 mm²

349.304	· 2 CEE sockets, 16A/400V, 5-pin · 2 german type socket outlets, 16A/230V
349.305	· 2 CEE sockets, 16A/400V, 5-pin · 2 german type socket outlets, 16A/230V · 1 compressed-air supply with input 1/2" and 2x outlet 1/2"

Energy cube 3x CEE

For cable diameter 5x 1.5 mm² – 5x 4 mm²

349.306	· 3 CEE sockets, 16A/400V, 5-pin
---------	----------------------------------

For cable diameter 5x 1.5 mm² – 5x 4 mm²

349.307	· 3 CEE sockets, 16A/400V, 5-pin · 1 compressed-air supply with input 1/2" and 2x outlet 1/2"
---------	--

For cable diameter 5x 1.5 mm² – 5x 6 mm²

349.308	· 3 CEE sockets, 32A/400V, 5-pin
349.309	· 3 CEE sockets, 32A/400V, 5-pin · 1 compressed-air supply with input 1/2" and 2x outlet 1/2"



**10
YEAR
WARRANTY!**



Two plug retainers to hold earthing contact plug when not in use

Includes thread and crank handle for easier winding of cable

Maximum protection against electrical hazard, fully insulated

Meistertrommel

The choice of the professional is the BACHMANN Meistertrommel. Wherever you work, as an artisan or in industry, this cable reel keeps you on the safe side – and assures you of Bachmann’s renowned quality. Each individual Meistertrommel is checked for conformity and documented with a certificate of inspection.



Hammer symbol for heavy-duty use on building sites



Dust protected
Splash-proof

K 2

Conforms to the requirements of German BGI 600 and 608



Conforms to the requirements of German BGI 600 and 608

The advantages at a glance

- 10-year warranty on reel body, stand frame and supporting frame
Wearing parts are not included in this warranty
- Resistant to fuel and oil substances. Good resistance to chemicals
Weatherproof, no rust, no corrosion!
- Temperature stability range - 15°C to +60°C

Part no. | Version

Meistertrommel 3x german type outlet

25 m H07RN-F3G 1.5 mm², black

399.001 | · 3 german type socket outlets, with german type central plug

40 m H07RN-F3G 1.5 mm², black

399.002 | · 3 german type socket outlets, with german type central plug

Meistertrommel 4x german type outlet

Empty reel

399.000 | · 4 german type socket outlets

25 m H07RN-F3G 1.5 mm², black

399.003 | · 4 german type socket outlets, with german type central plug



Meistertrommel

Part no. | Version

Meistertrommel 4x german type outlet

40 m H07RN-F3G 1.5 mm², black

399.004 | · 4 german type socket outlets, with german type central plug

50 m H07RN-F3G 1.5 mm², black

399.005 | · 4 german type socket outlets, with german type central plug

40 m H07RN-F3G 2.5 mm², black

399.006 | · 4 german type socket outlets, with german type central plug

Meistertrommel 3x german type outlet, 1x CEE

Empty reel

399.007 | · 3 german type socket outlets
· 1 CEE socket 16A

25 m H07RN-F5G 1.5 mm², black

399.008 | · 3 german type socket outlets
· 1 CEE socket, 16A with CEE plug, 16A

25 m H07RN-F5G 2.5 mm², black

399.009 | · 3 german type socket outlets
· 1 CEE socket, 16A with CEE plug, 16A

Meistertrommel Site Manager Austria

40 m XYMM-J3G 1.5 mm², yellow

399.012 | · 4 german type socket outlets, with german type central plug

25 m XYMM-J5G 1.5 mm², yellow

399.013 | · 2 german type socket outlets
· 1 CEE socket, 16A with CEE plug, 16A

Meistertrommel Other

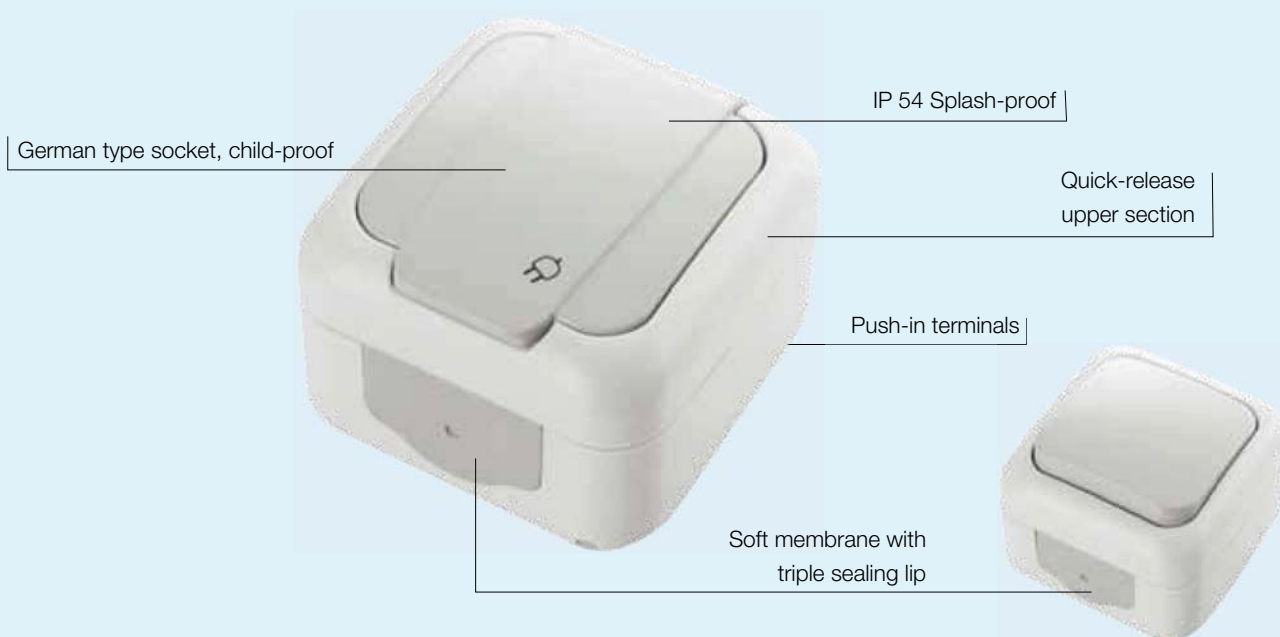
399.010 | · Empty reel with closed plate for user's own fitting

399.011 | · Metal wall mount



Customising of Meistertrommel on request

- Cable colours: black, red, blue, yellow, orange, green, pink H07BQ
- Reel colours: black, red, blue, green
- Individual cable labelling



NEPTUN IP 54

Splash-proof.

The advantages at a glance

- IP 54
- VDE approved
- Specialist trade range
- Push-in terminals
- Soft membrane with triple sealing lip
- Quick-release upper section
- Attractive design
- Colours: grey + white

Neptun surface-mounted IP 54 switches and sockets for damp conditions

Part no.	Version	Unit
----------	---------	------

Neptun IP 54 Switch

Grey		
410.000	· Changeover (2-way) switch	10 items
410.002	· Multi-position switch	10 items
410.003	· Intermediate switch	10 items
410.004	· Control circuit breaker (heating emergency switch)	10 items

White

410.001	· Changeover (2-way) switch	10 items
---------	-----------------------------	----------

Neptun IP 54 Pushbutton

Grey		
410.005	· Button with lamp symbol	10 items
410.006	· Button, illuminated	10 items
410.020	· Button with bell symbol	10 items
410.021	· Button with name tag, illuminated	10 items

Neptun IP 54 Sockets

Grey		
410.007	· Socket	10 items
410.016	· Socket, lockable, closing type 1	10 items
410.017	· Socket, lockable, closing type 2	10 items
410.009	· Dual socket, horizontal	10 items
410.011	· Dual socket, vertical	10 items

White

410.008	· Socket	10 items
410.010	· Dual socket, horizontal	10 items
410.012	· Dual socket, vertical	10 items

Neptun IP 54 Combination

Grey		
410.018	· Socket	10 items
410.013	· Socket, lockable, closing type 1	10 items

Neptun IP 54 Combination

White		
410.019	· 2-way switch/socket arranged vertically	10 items

Neptun IP 54 Accessories

Grey		
410.014	· Glow lamp for switch material	10 items
410.015	· Adapter	10 items





394.170



394.171



394.172

GARDEN POSTS

Practical options for the garden.

The advantages at a glance

- German type socket outlets, splashproof to IP 44
- Connecting block for connecting external supply cables for outdoor use with minimum cross-section 1.5 mm², maximum 3.0 mm²
- Power posts for the garden in weatherproof polystyrene
- Granite look fits in to garden setting
- Allows easy use of garden equipment, lighting and irrigation systems
- The timer model lets you programme electrical garden equipment to switch on and off at specified times. Thus for example the garden can be watered regularly even when the owner is away.
- The model with the lamp provides a cosy atmosphere for garden parties or illuminates the way to the door of the house

Part no. | Version

Garden post 4x german type **L x W x H: 160 x 160 x 280 mm**

1x splash water protection

394.170 | · 4x IP 44 german type sockets for outdoor use

Garden post with timer and 2x german type **L x W x H: 160 x 160 x 280 mm**


1x splash water protection, 1x timer

394.171 | · 2x IP 44 german type sockets for outdoor use
· Mechanical 24 h timer

Garden post with lamp and 2x german type **L x W x H: 150 x 150 x 460 mm**

1x splash water protection, 1x lamp

394.172 | · 2x IP 44 german type sockets for outdoor use
· E27 holder for energy-saving lamp, max. 11W

 German type extension cable, 16 A/250V~, IP20, PVC, 70 °C

- End 1: German type central plug, with dual earthing contact system, moulded
- End 2: German type coupling, moulded with cover

Part no.	Version	Unit
German type extension cable: H05VV-F3G 1,50 mm², safety colour orange		
Length: 5 m		
341.878	· Orange	1 item
Length: 10 m		
341.879	· Orange	1 item
Length: 25 m		
341.870	· Orange	1 item

Colour optimised



For a complete overview of our product range, see the main Bachmann catalogue, the Custom Module brochure, the MediaNet brochure, the manufacturing brochure or our website www.bachmann.com.



**BACH
MANN**

**BACH
MANN**

Bachmann GmbH & Co. KG

Ernstthaldenstraße 33, D-70565 Stuttgart, Germany
Telephone +49 711 86602-0, Fax +49711 86602-34
info@bachmann.com, www.bachmann.com